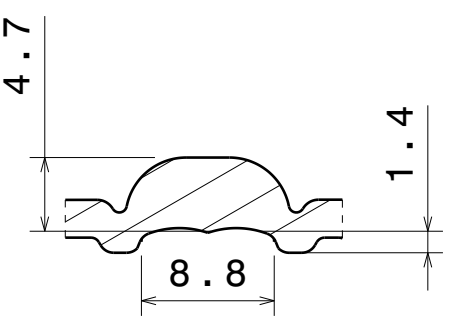
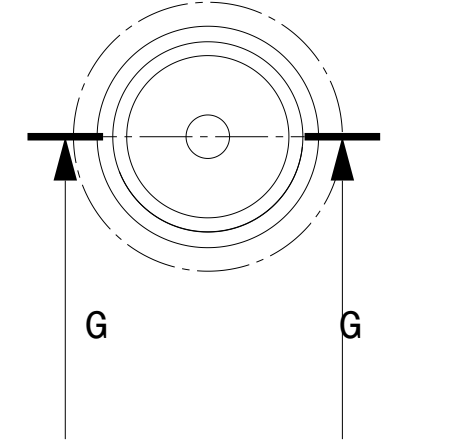


Bottom view
Scale: 1:1

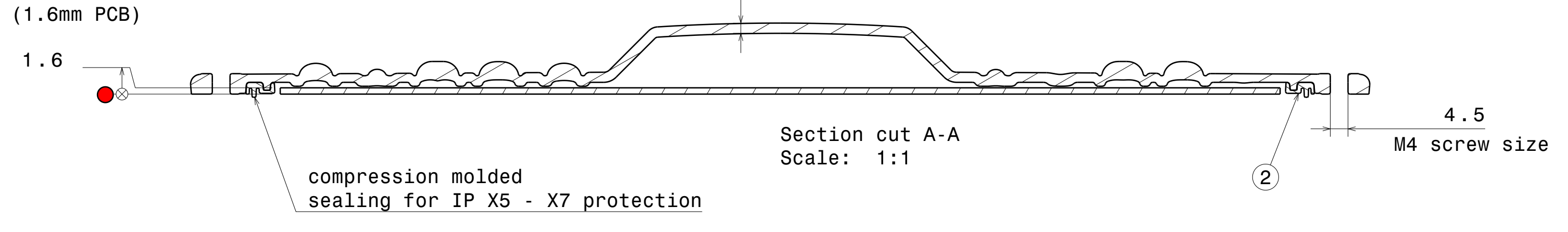


Section cut G-G
Scale: 2:1

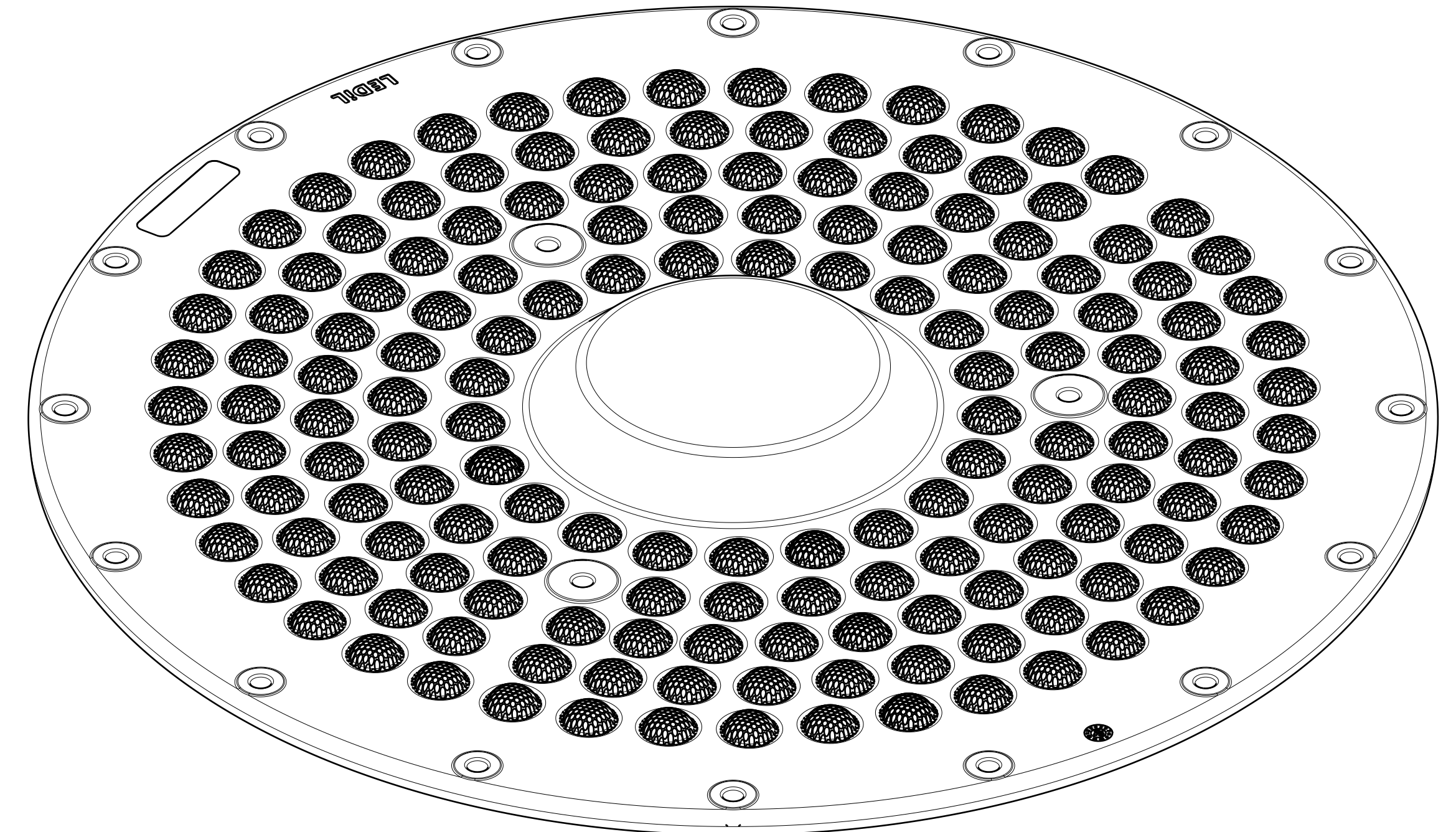


Detail F
Scale: 2:1

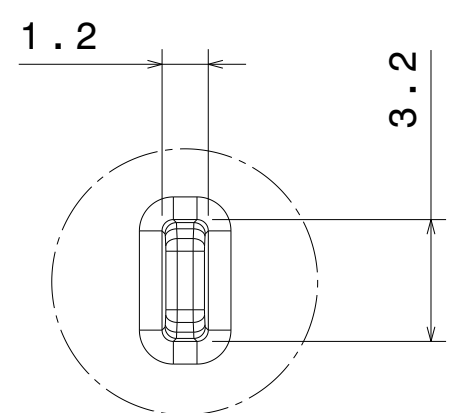
Silicone seal is tested to work in LEDiL test assemblies. Customer is recommended to test the sealing in the end product due many variables, such as heat sink surface and possible chemical traces



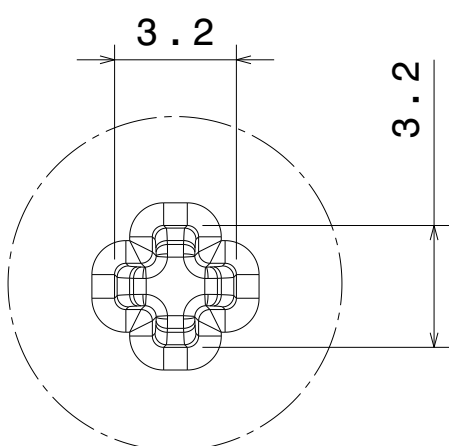
Section cut A-A
Scale: 1:1



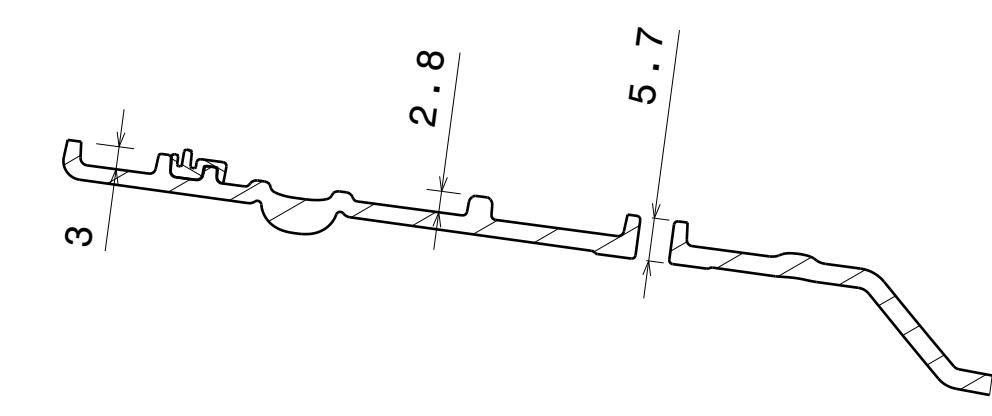
Isometric view
Scale: 1:1



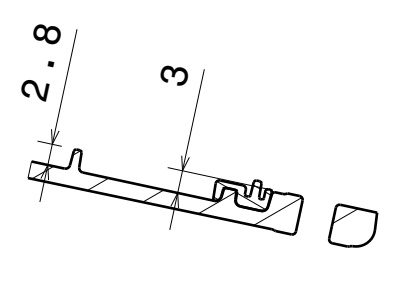
Detail C
Scale: 5:1



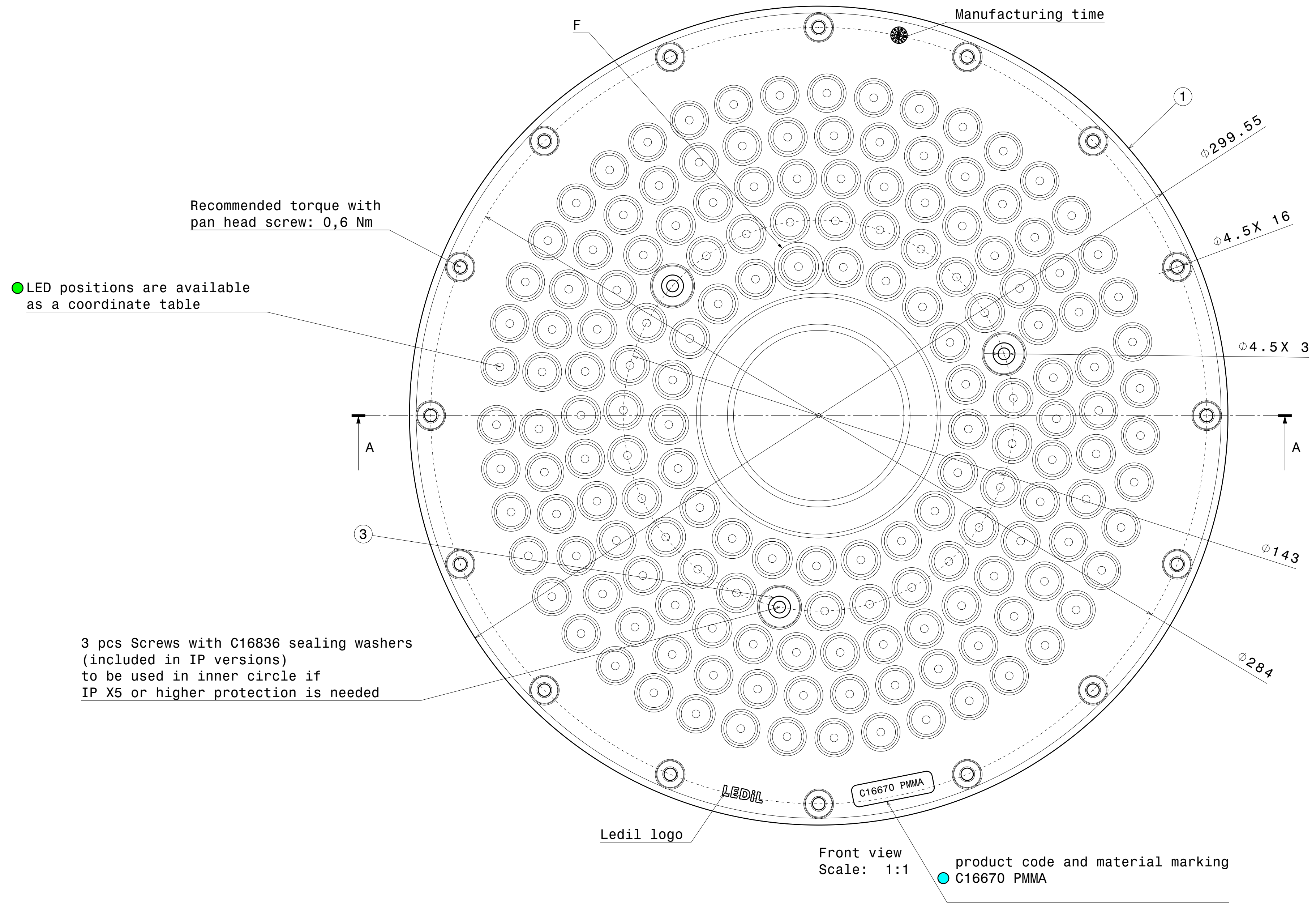
Detail B
Scale: 5:1



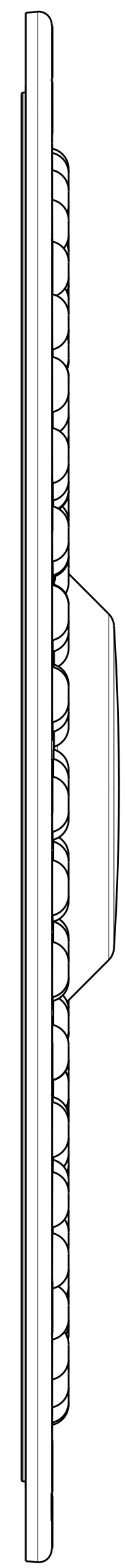
Section cut D-D
Scale: 1:1



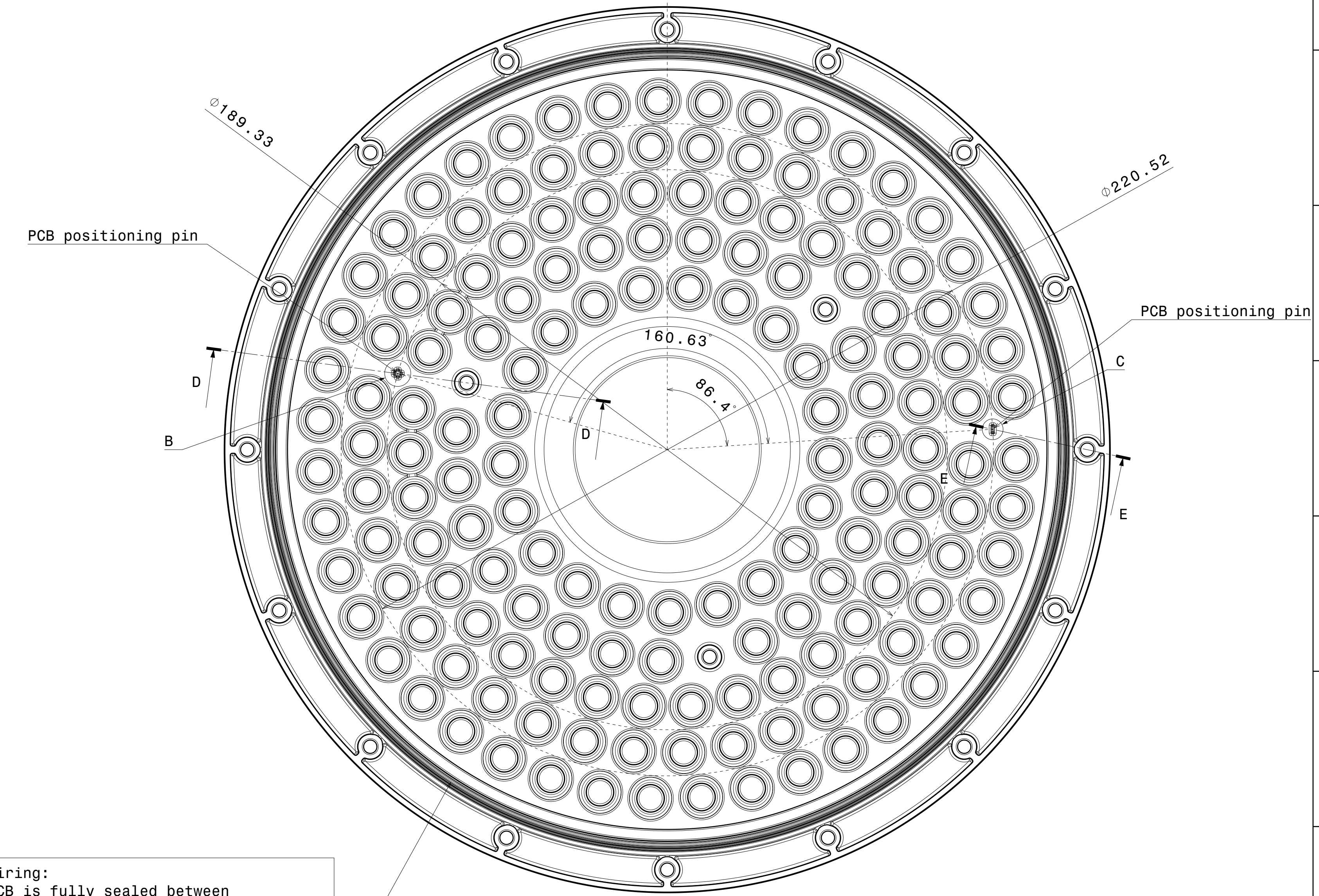
Section cut E-E
Scale: 1:1



Front view
Scale: 1:1



Left view
Scale: 1:1



Rear view
Scale: 1:1

INDEX	Pcs	PART	TYPE	MATERIAL	COLOR / COATING
1	1	C16670_VICTORIA-W	Lens	PMMA	Clear
2	1	C16805_VICTORIA-SEAL	Seal	Silicone	White
3	3	C16836_VICTORIA-O-RING	Seal	PA	Clear

MECHANICAL DRAWING
PRODUCT
CS16838_VICTORIA-IP-W



Plastic moulding general tolerances according to DIN 16801-100 and applies if not otherwise shown in the drawing.
Silicone moulding general tolerances according to ISO 8500-1 Class M0 and applies if not otherwise shown in the drawing.

FIRST ANGLE PROJECTION:

SCALE 1:1

WEIGHT 248g

AO SHEET 1/1

This drawing is the property of LEDiL Oy. It may not be copied or otherwise distributed without prior written permission from LEDiL Oy.

Notes

- PCB or heatsink level.
- LED location
- Ensure LED fitting from a product specific 3D model available from www.ledil.com
- For more details about installation please see LEDiL Installation Guide on www.ledil.com